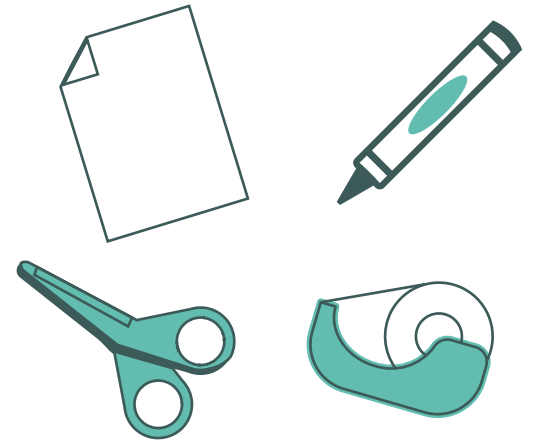


GO SAFELY, CALIFORNIA DICE GAME

WHAT YOU'LL NEED*

*Younger children may need adult supervisions and assistance.

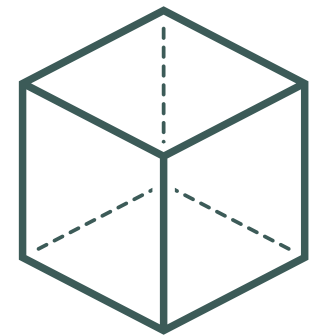
- > Printer
- > Heavy weight printer paper or card stock
- > Crayons or markers to customize your dice
- > Scissors
- > Tape
- > Lots of energy and imagination!



ASSEMBLY INSTRUCTIONS

1. Print the instructions and dice templates
2. Decorate or color your dice, if desired. You should have three dice total:
 - > Time restraint dice
 - > Action dice
 - > Scenario dice

3. Carefully cut out the dice where indicated
4. Assemble the dice and tape together



GAME INSTRUCTIONS*

*California's public health guidance advises to limit mixing with people you don't live with as much as possible. Please be mindful of COVID-19 safety measures when playing this game.

1. Set an overall time limit for the game (i.e., 30 minutes, 1 hour, etc).
2. The first player/team will roll the first and second dice in order to see what time and action they roll. These two dice will be rolled in front of all players. The third dice, the scenario dice, will be rolled separately and will only be seen by the player/team whose turn it is (i.e. the player/team who is rolling each dice).
3. Once the player has decided each of these, they will have the allotted amount of time to get another player to guess the scenario either being explained (without using the same words on the dice), sang to them, acted out, mimed, drawn, or danced.
4. If a player's scenario is guessed correctly that player/team earns a point and the dice are passed to the next player/team.
5. The first player/team to reach 10 points wins!

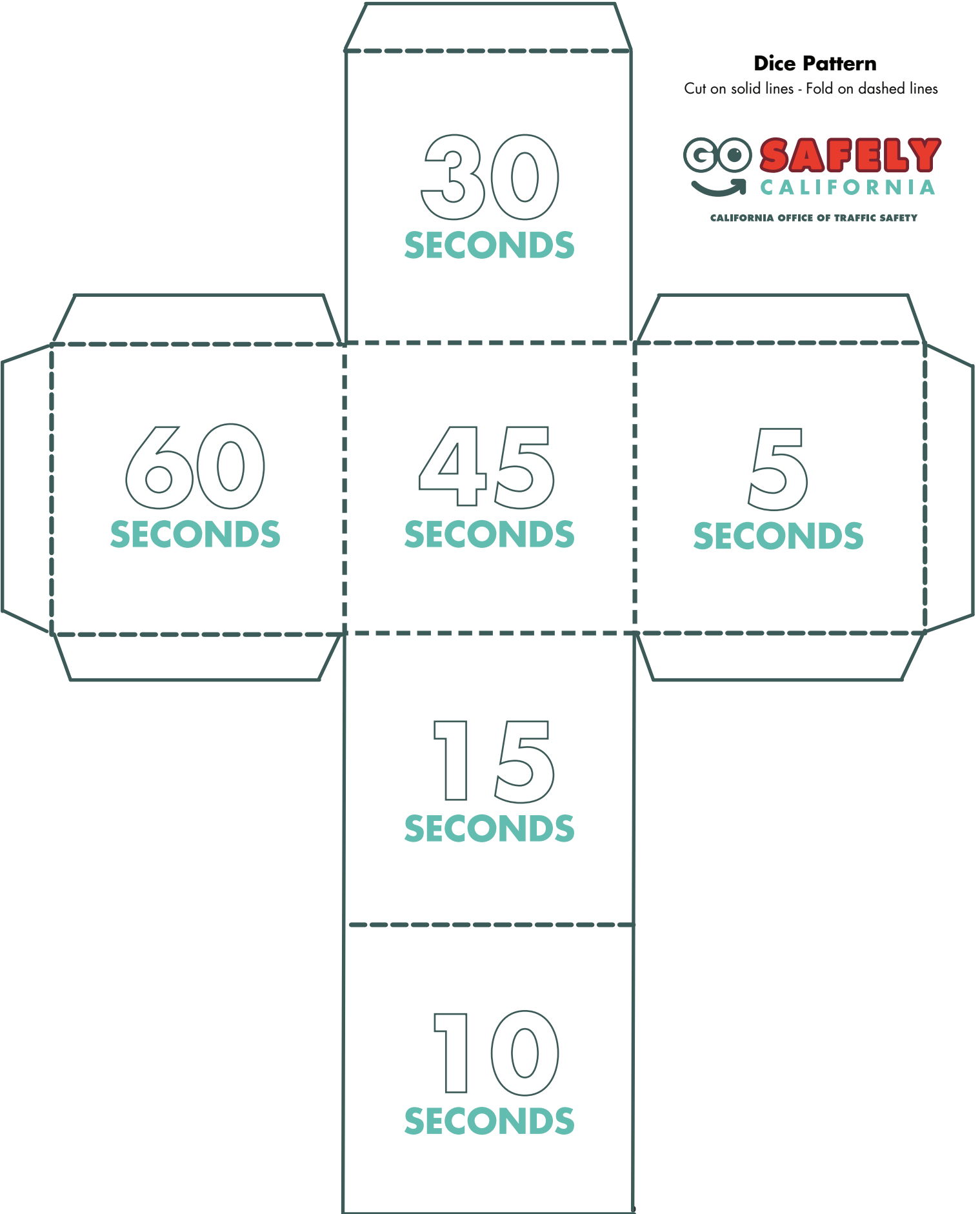
gosafelyca.org

 GoSafelyCA  @GoSafelyCA  OTS_CA


CALIFORNIA OFFICE OF TRAFFIC SAFETY

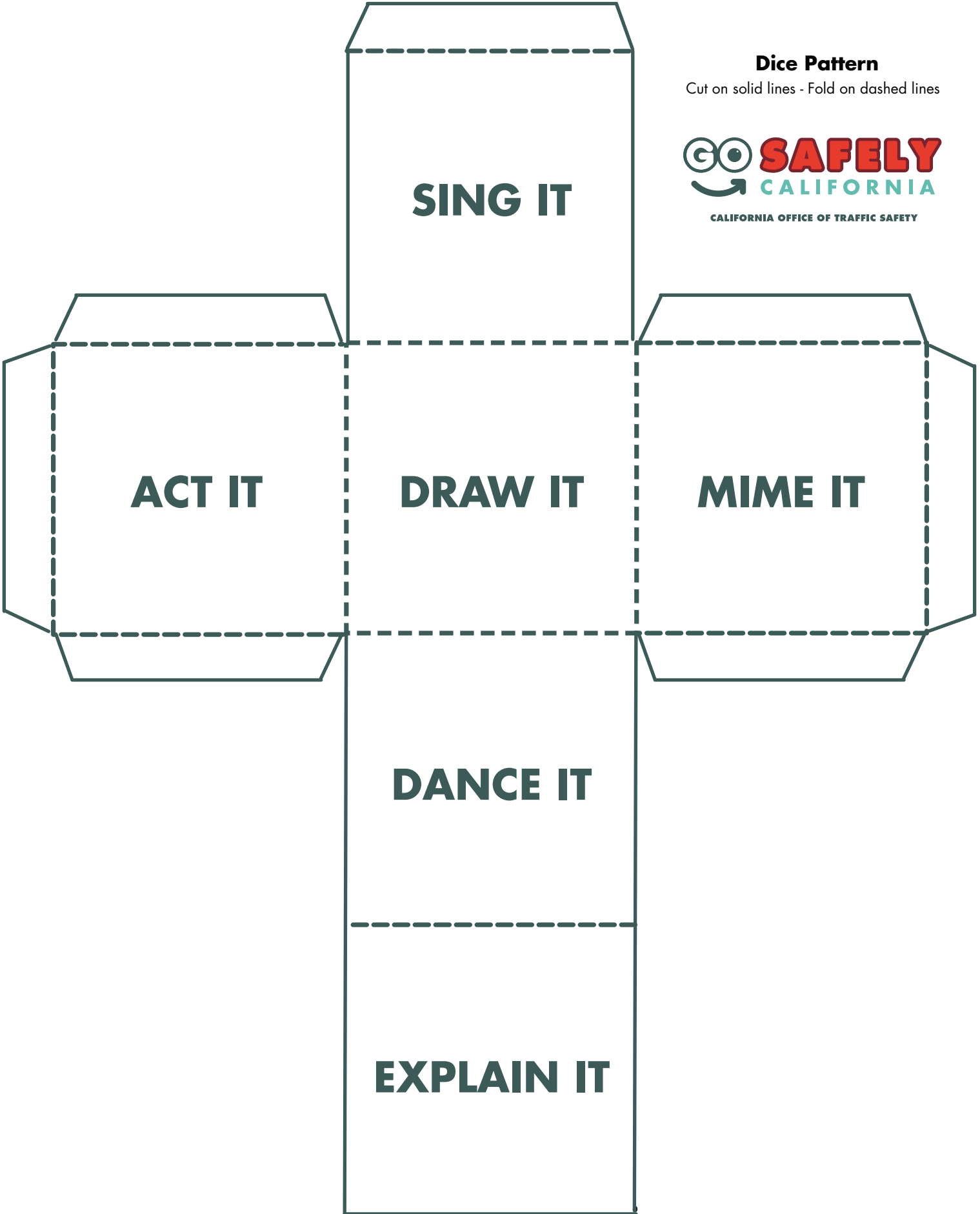
Dice Pattern

Cut on solid lines - Fold on dashed lines



Dice Pattern

Cut on solid lines - Fold on dashed lines



Dice Pattern

Cut on solid lines - Fold on dashed lines

